



Airless Readymix Plasters

Updated readymix plasters portfolio – for 2014

Build for the world we live in



Knauf Airless Readymix Plasters

As part of our on-going commitment to innovation, we have introduced new airless readymix plasters for 2014 which can be used with the popular piston pump spray machines.

Knauf airless readymix plasters are a highly efficient alternative to traditional plasters for finishing walls and ceilings. They are made from crushed and milled marble (a waste material) with added polymer and organic binders.

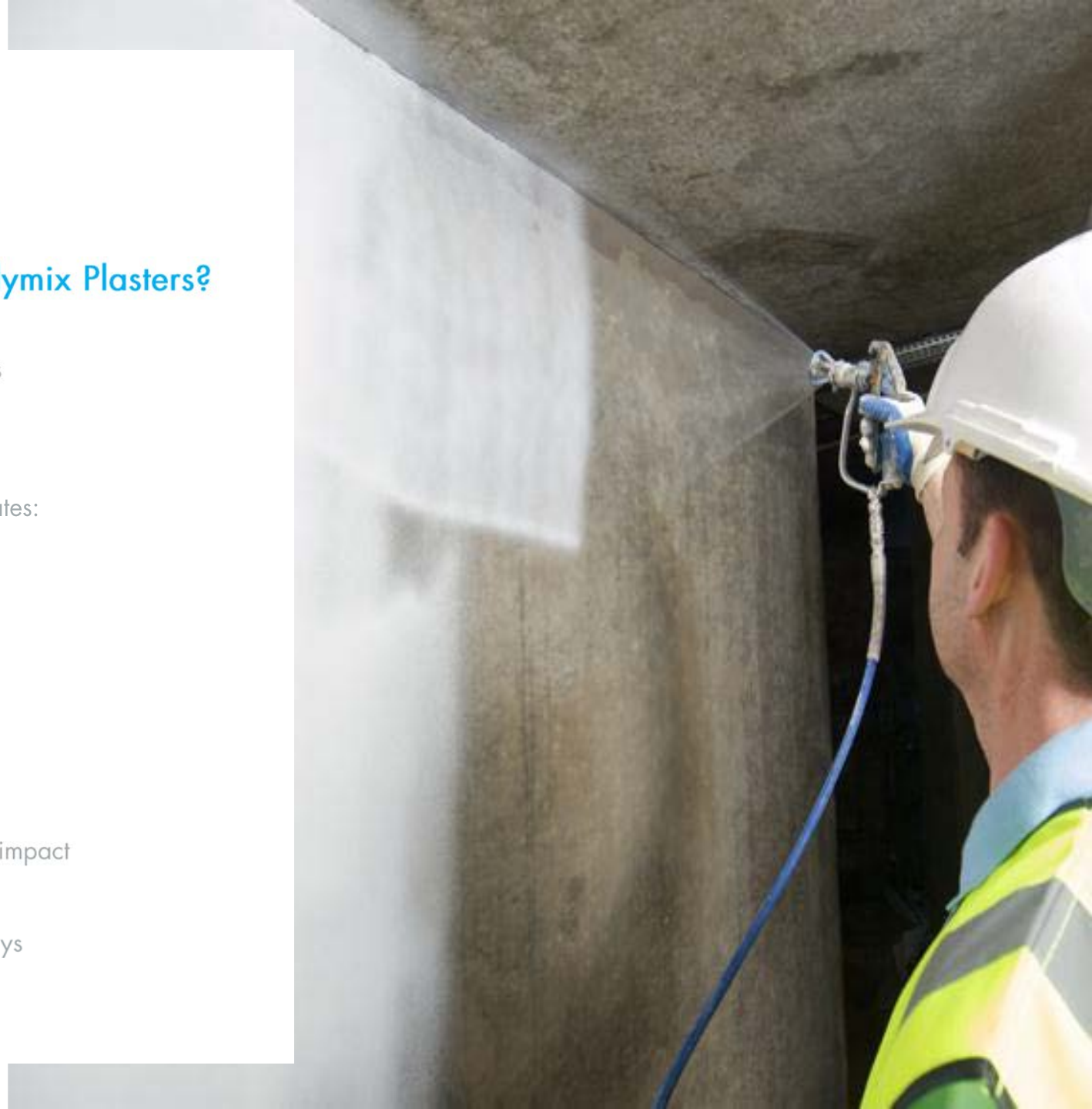
New airless readymix plasters:

1. Knauf Airless Backing
2. Knauf Airless DuraDeco
3. Knauf Airless Finish
4. Knauf Airless Primer Surfacers



Why use Knauf Airless Readymix Plasters?

1. Fast and clean application process
2. Ease of application
3. Quality of finish
4. Wide range of direct-apply substrates:
 - Plasterboards
 - Composite boards
 - Concrete
 - Aircrete
 - Lime cements and plasters
 - Refurbishment
5. No primers or bonding agents
6. Environmental and health & safety impact
7. Competitive
8. Reduces remedial costs / time delays



Features and Benefits

1. Delivered ready to use – no mixing on site
2. Flexibility – less cracking, chipping and flaking
3. Quicker drying times
4. Breathable – suitable for lime plasters / cements
5. Rapid application – 250m² plus per 8 hour day
6. Ease of finishing – spray, level, sand, paint
7. Less decoration – cost and time saving
8. Environmentally friendly
 - Improved water and waste management
 - Recyclable bags
 - Less landfill impact and costs
9. Safe
 - For the user and environment
 - Water based
 - No harmful toxic chemicals
10. Minimal hazards
 - Minimises the need for platforms, hop ups
 - Up to 3m height can be finished from floor level



Application Process of Knauf Airless Readymix Plasters

1. Preparation

Ensure all joints, corners etc. have been filled and Knauf Joint Tape bedded in correctly with Knauf Joint Filler. Secure angle beads to window reveals and external corners.

2. Spraying Knauf Readymix Plasters

Spray apply the plaster in overlapping bands.

3. Levelling Knauf Readymix Plasters

After applying the first coat, level flat with a spatula and use a corner trowel on internal angles. Allow to dry; this typically takes 12-24 hours. Repeat step 2 & 3. (apply a second coat and then use a spatula to rule flat applying a little more pressure to flatten the surface). Allow to dry; again this typically takes 12-24 hours.

4. Sanding

Sand the wall with a drywall sander ready for decoration.



Compatible Machines

These are the recommended machines for spray application of Knauf Airless Readymix Plasters:

- Graco Mark 5
- Wagner PS 339
- ASM H370

All machines are 110 vlt, 16 amp power.

Knauf recommends the following tip sizes

for Knauf Airless Readymix Plasters:

- 531
- 533
- 535

for Knauf Airless Primer Surfacers:

- 519





1. Knauf Airless Backing

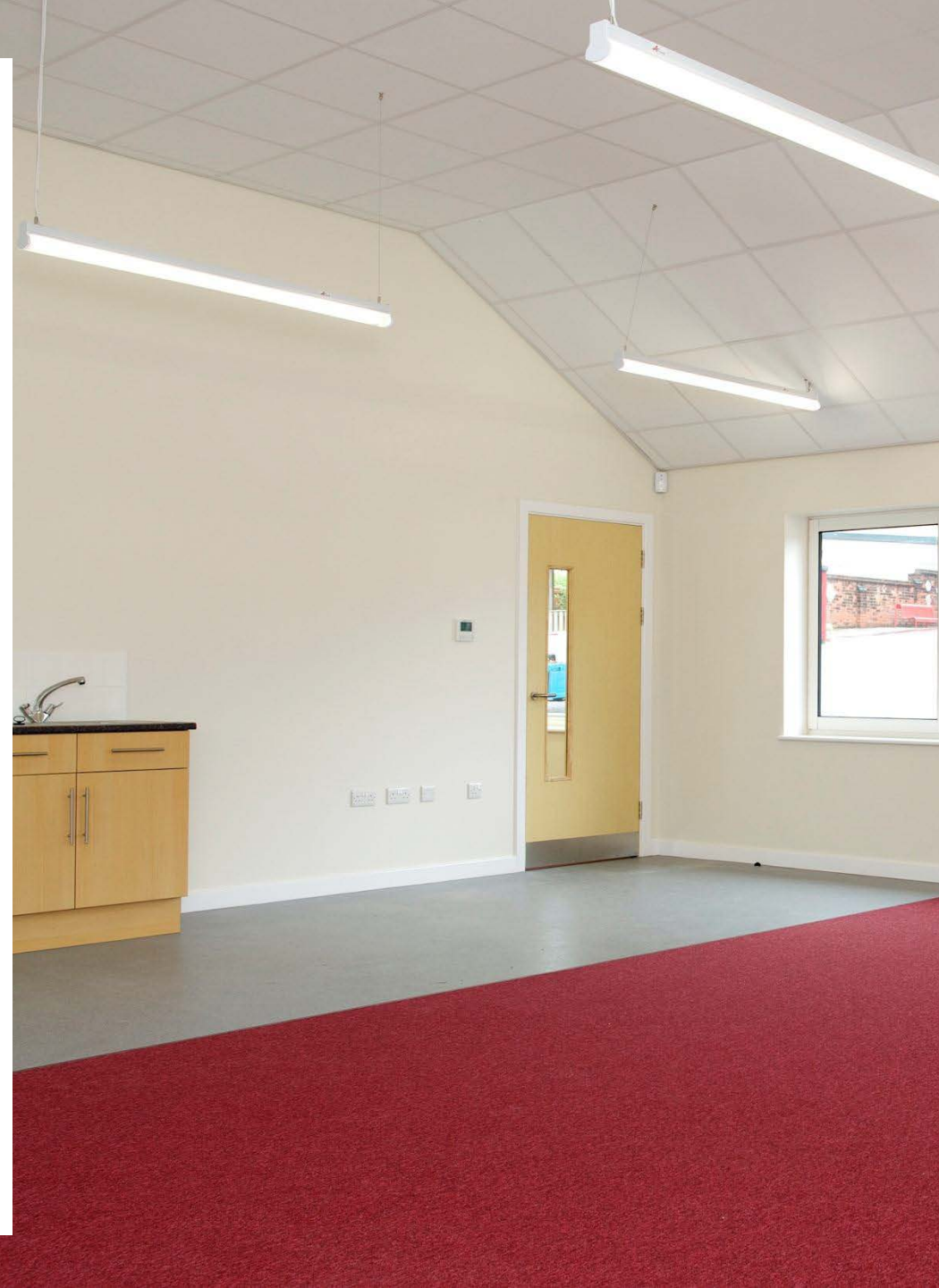
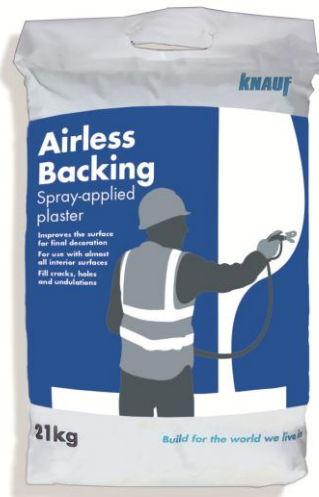
Build for the world we live in



What is Knauf Airless Backing?

It is a spray-applied and durable backing plaster used to improve the surface for final decoration by filling or levelling any imperfections. It is a semi-lightweight product, used as the first coat over the whole surface and finished using Knauf Airless DuraDeco or Knauf Airless Finish.

It is the replacement for Knauf Plano.



Knauf Airless Backing

Coverage: Up to 15m² per 21kg bag
at 1 mm thickness

Thickness: 1-4mm

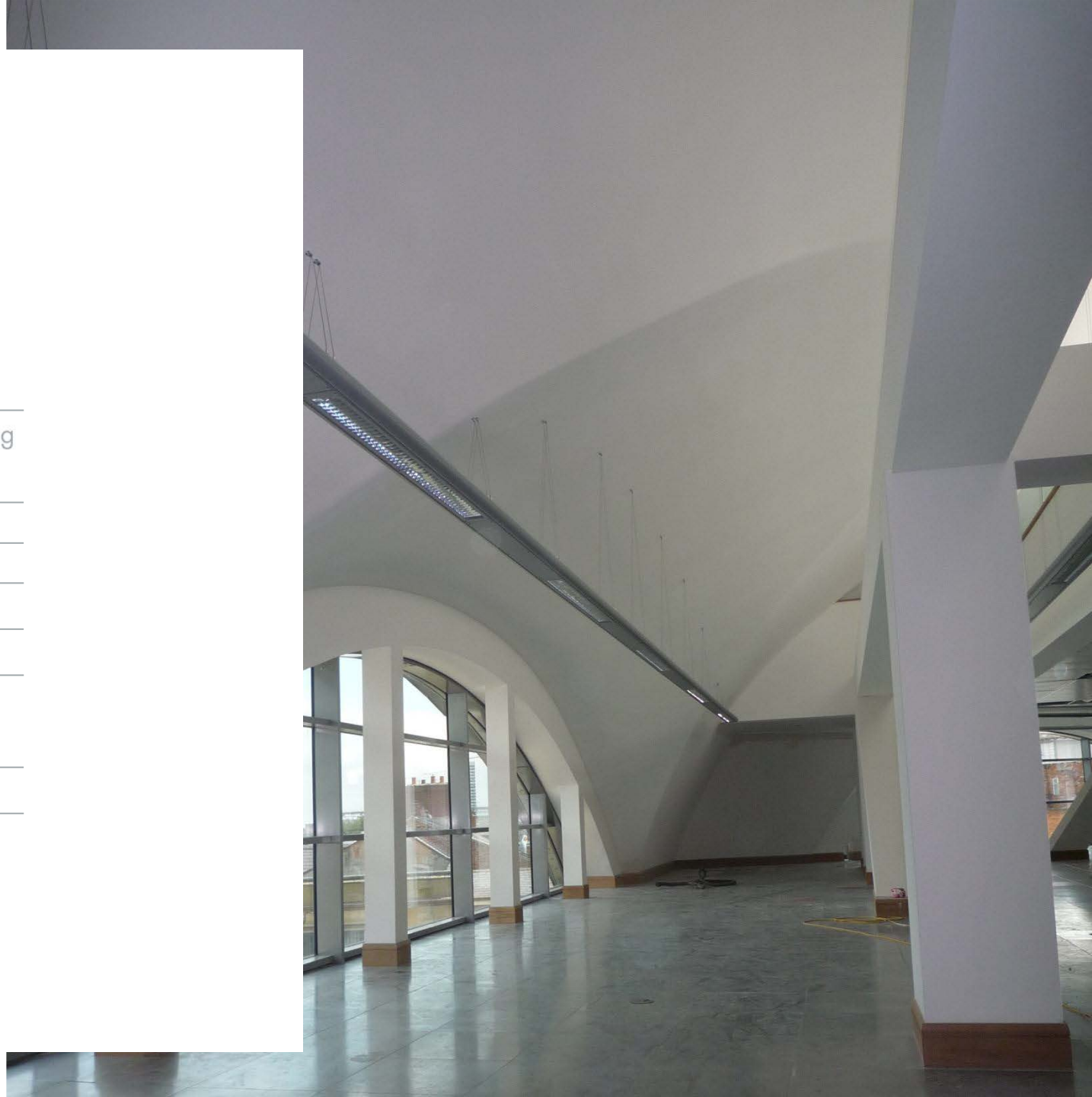
Finish colour: White

Bag size: 21kg

Material no: 470359

Pallet details: 40 bags
1.00 tonnes (approx.)

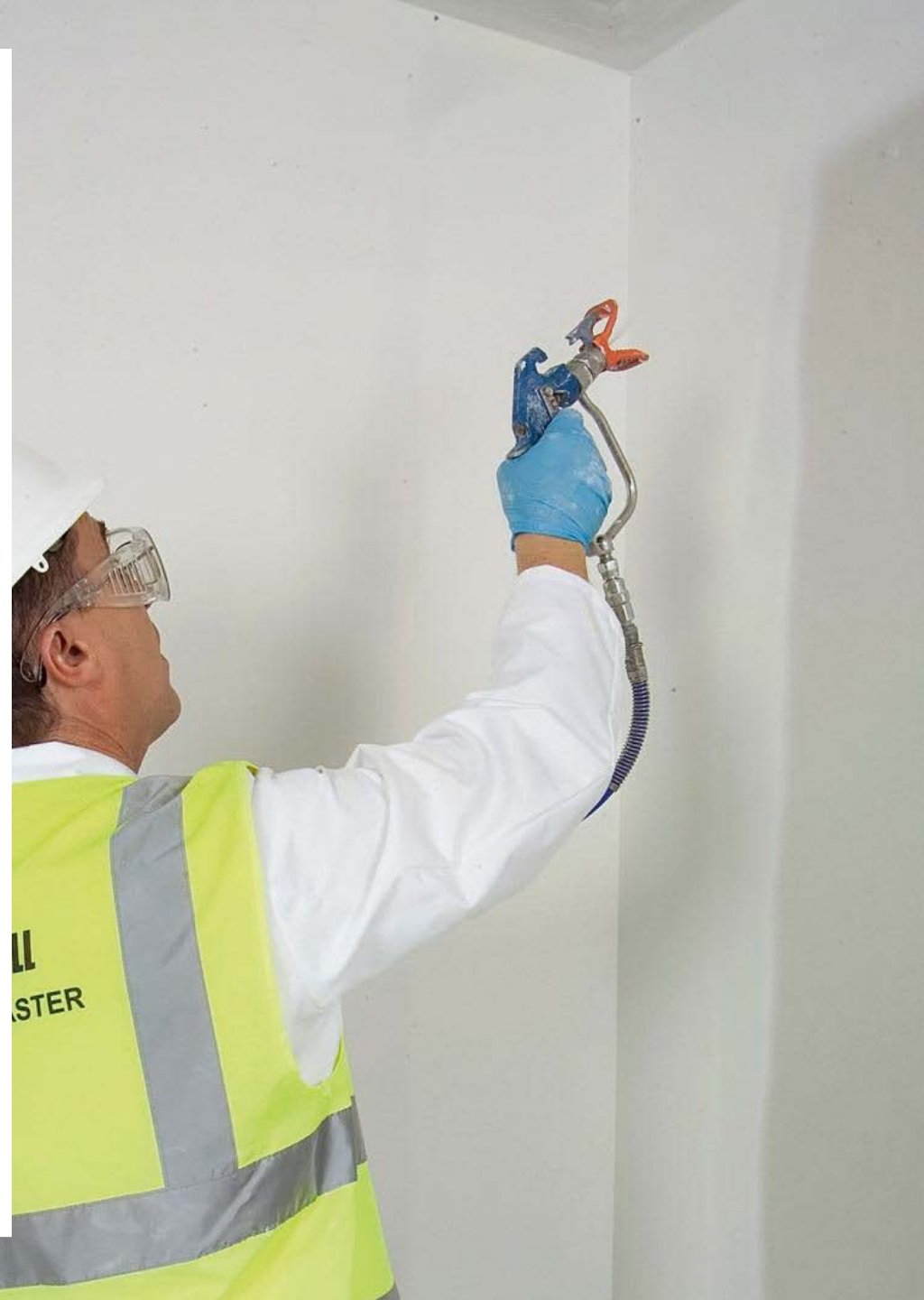
Shelf life: 9 months





2. Knauf Airless DuraDeco

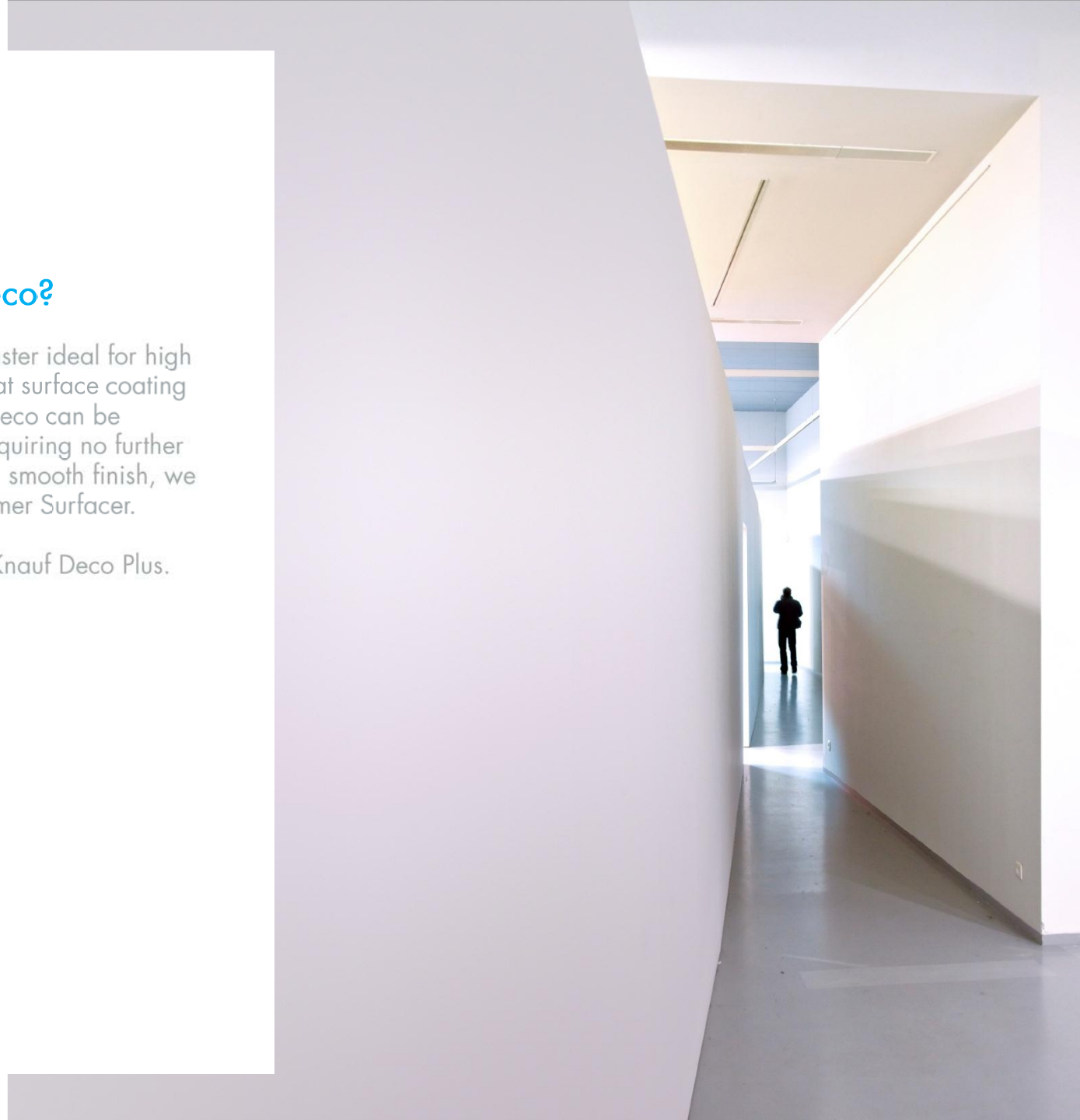
Build for the world we live in



What is Knauf Airless DuraDeco?

It is a spray-applied and hard-wearing plaster ideal for high impact areas. It can be applied as a 2-coat surface coating to walls and ceilings. Knauf Airless DuraDeco can be applied as a decorative textured finish, requiring no further decoration or painting. Alternatively, for a smooth finish, we recommend sealing with Knauf Airless Primer Surfacer.

It is the replacement for Knauf Deco and Knauf Deco Plus.



Knauf Airless DuraDeco

Coverage: Up to 18m² per 25kg bag
at 1 mm thickness

Thickness: 1-2mm

Finish colour: White

Bag size: 25kg

Material no: 470358

Pallet details: 40 bags
1.00 tonnes (approx.)

Shelf life: 9 months





3. Knauf Airless Finish

Build for the world we live in



What is Knauf Airless Finish?

It is a spray-applied and durable plaster. It is ideally suited to projects requiring a smooth finish to walls and ceilings. Knauf Airless Finish can be applied as a 2-coat surface coating or as a second coat over Knauf Airless Backing, before decoration (a mist and one coat of paint). Alternatively, it can be finished using Knauf Airless Primer Surfacers.

It is the same product as our previous Knauf Airless product, simply with a name change.



Knauf Airless Finish

Coverage: Up to 22m² (16m²) per single coat
at 1 mm (2mm) thickness

Thickness: 1-2mm

Finish colour: White

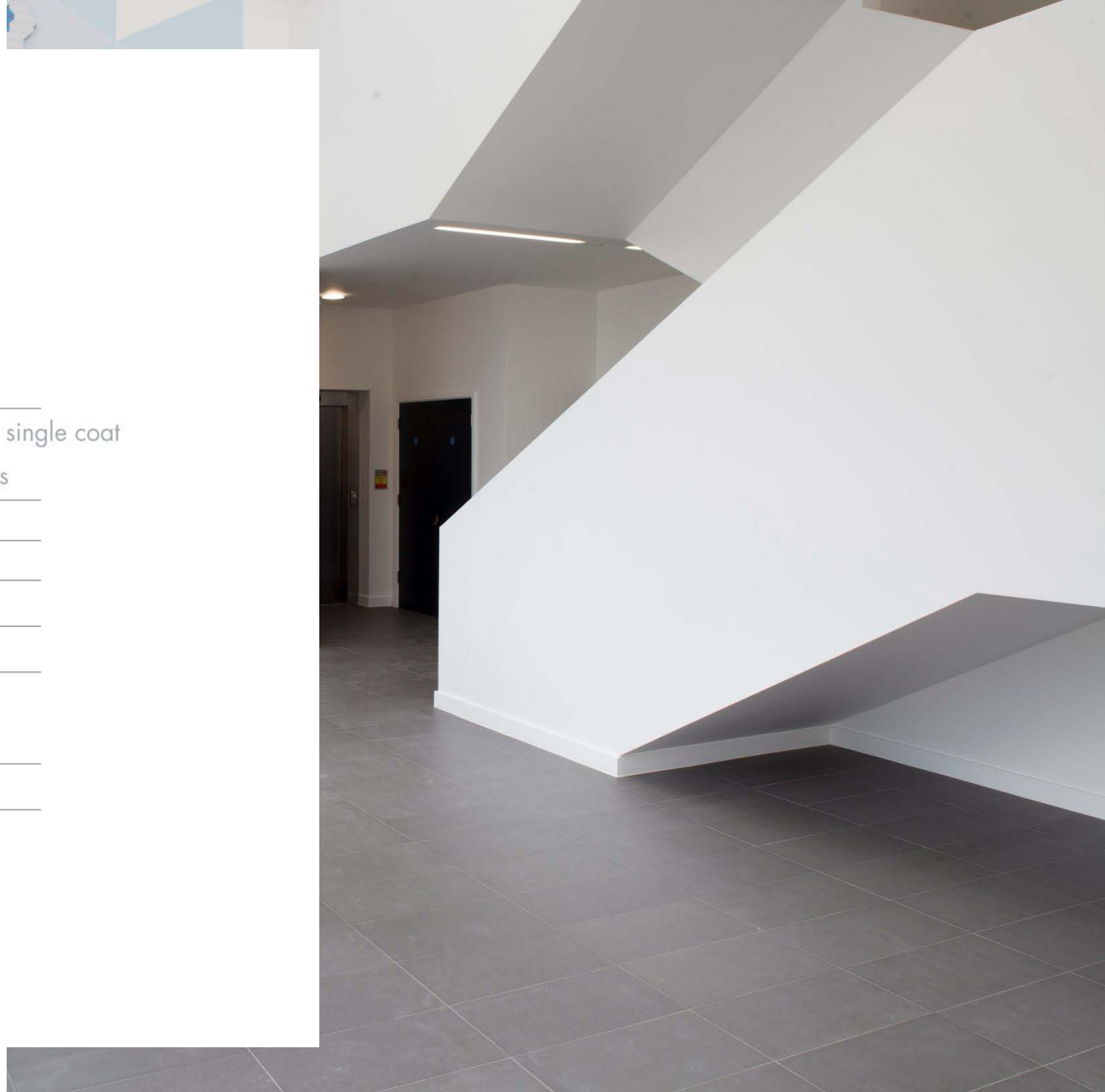
Bag size: 25kg

Material no: 470362

Pallet details: 40 bags

1.00 tonnes (approx.)

Shelf life: 9 months





4. Knauf Airless Primer Surfacer

Build for the world we live in



What is Knauf Airless Primer Surfacer?

It is a durable and hard-wearing primer which gives smoother finished walls and ceilings when compared to traditional plasterboard primers. It achieves a high standard of paint finish with no visible joints, even in critical light conditions. Specially formulated for use with readymix spray plasters. Applied in a single sprayed coat over Knauf Airless DuraDeco or Knauf Airless Finish.

It is the replacement for Knauf Sheetrock Tuff-Hide.



Knauf Airless Primer Surfacer

Coverage:	Up to 55m ² per 24kg tub at 1mm thickness
-----------	---

Thickness:	0.5 - 1mm
------------	-----------

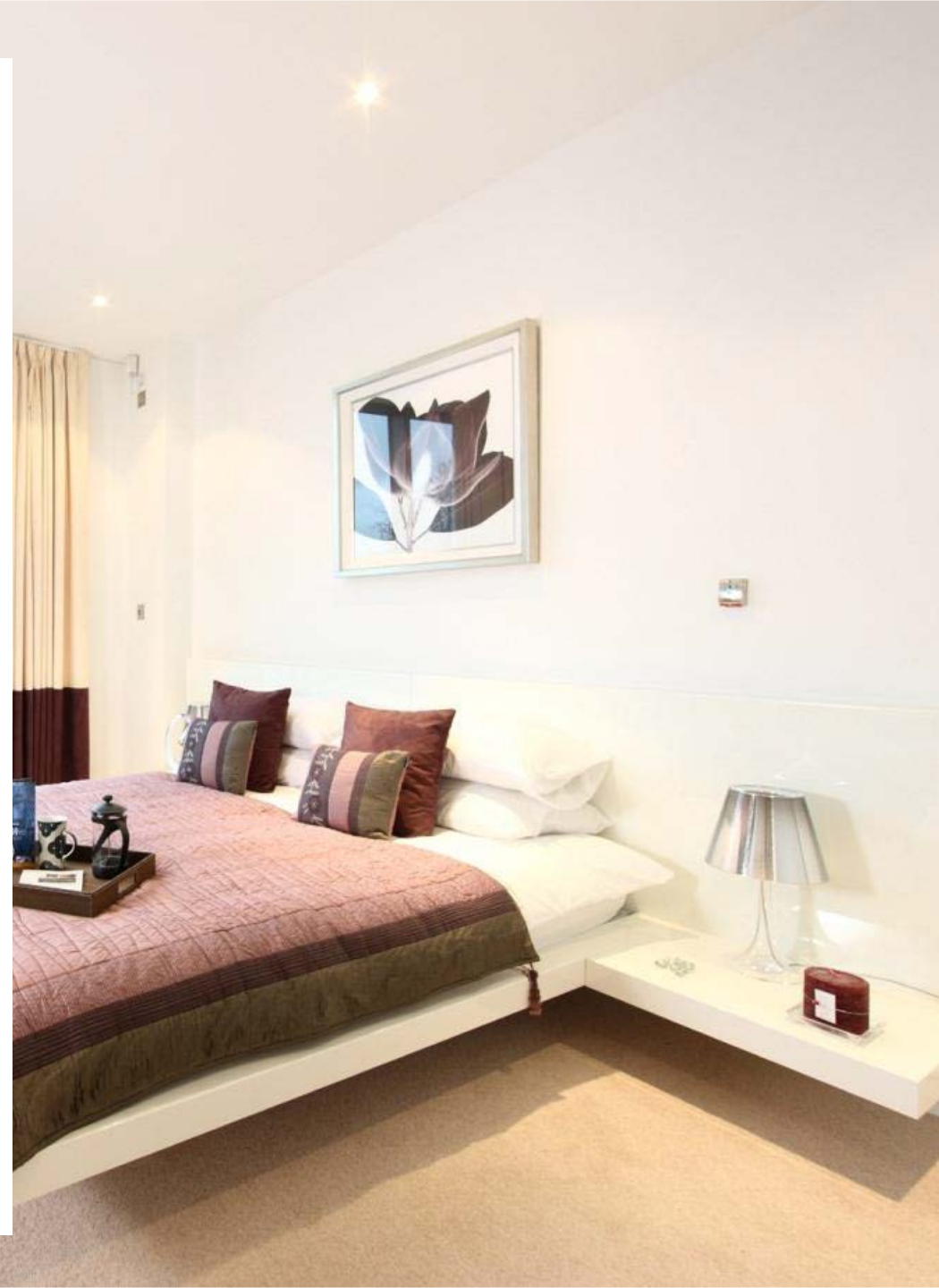
Finish colour:	White
----------------	-------

Tub size:	24kg
-----------	------

Material no:	465073
--------------	--------

Pallet details:	33 tubs 0.80 tonnes (approx.)
-----------------	----------------------------------

Shelf life:	9 months
-------------	----------



Summary

- Fast
- Clean
- Easy to apply
- Environmental benefits
- Reduced health and safety risks
- Competitive
- Full Knauf technical support
- Training

The fast clean alternative to internal finishing

